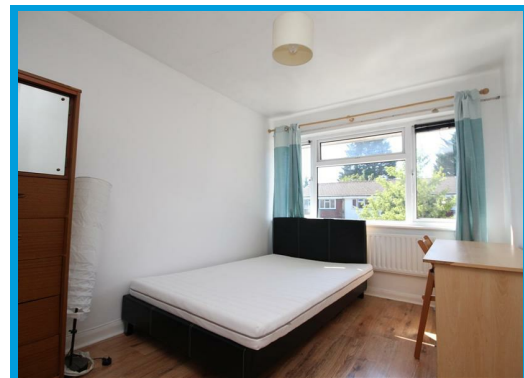
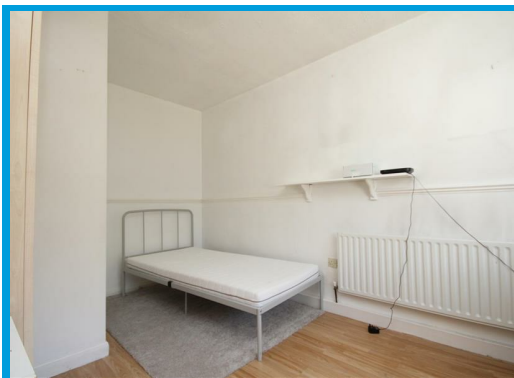




Guildford Park Avenue, Guildford, Surrey GU2 7NH

£2,600 PCM

**\*\* STUDENT ACCOMODATION 2026-2027 ACADEMIC YEAR\*\*** Located within a very short distance of Surrey University and Guildford town centre, this well presented four bedroom house offers spacious accommodation throughout.



# Description

Located within moments of Surrey University and Guildford town centre, this large four bedroom house is ideal for students and sharers.

The ground floor accommodation comprises an entrance hall leading to the kitchen/diner with doors to the garden, a double bedroom, a kitchen with appliances and a cloakroom.

Upstairs, the property features three further bedrooms and a bathroom with shower.

There is ample storage throughout and off street parking.

